



VERTICAL PUMPS

VWMS

VWMS



APPLICATIONS

- Industrial water transport
- City water transport

FEATURES

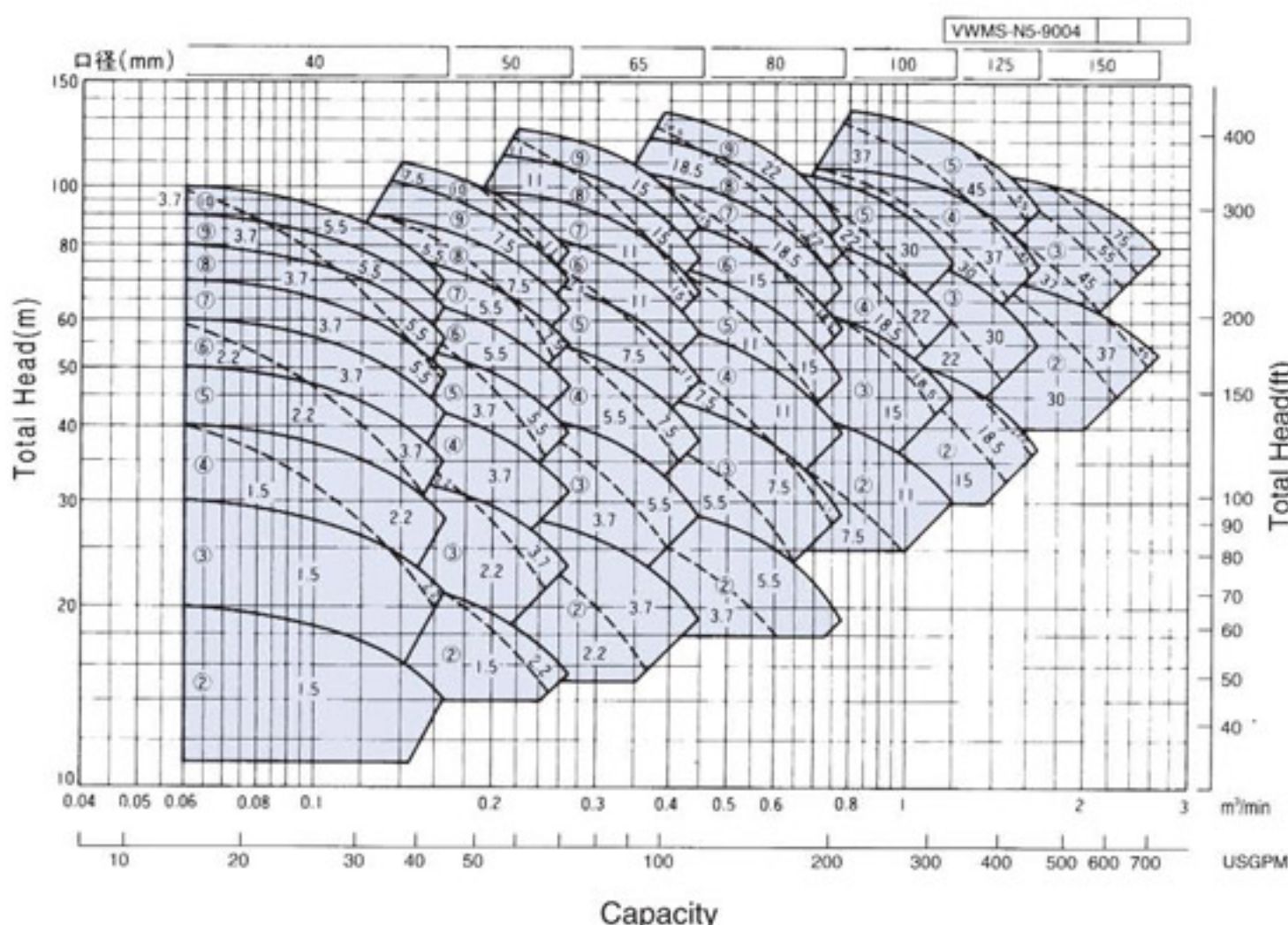
- High efficiency and over wide range is possible by double volute design.
- Axial thrust received by balance piston.
- Intermediate sleeve bearings are self-lubricated by pumping liquid.

SPECIFICATIONS

Liquid handled		City water, industrial water
Temperature		0~80°C
Density		1000kg/m ³
Construction	Impeller	Closed
	Shaft sealing	Gland packing
	Bearing	Upper section: Ball bearings (grease sealed) Intermediate and lower sections: Bearing metal (graphite)
Materials	Casing	FC200
	Impeller	CAC406/FC200/SCS13
	Shaft	SUS420J ₁
Flange		JIS10K

SELECTION CHART

50Hz 4pole Impeller materials CAC406, FC200[Synchronous speed:1500min⁻¹]



- Notes: 1. The selection chart is different for impeller material SCS13; please ask our sales office for information
2. The encircled numbers in the areas enclosed by unbroken lines indicate the number of stages, the numbers in the areas enclosed by broken lines indicate motor capacity in kW.