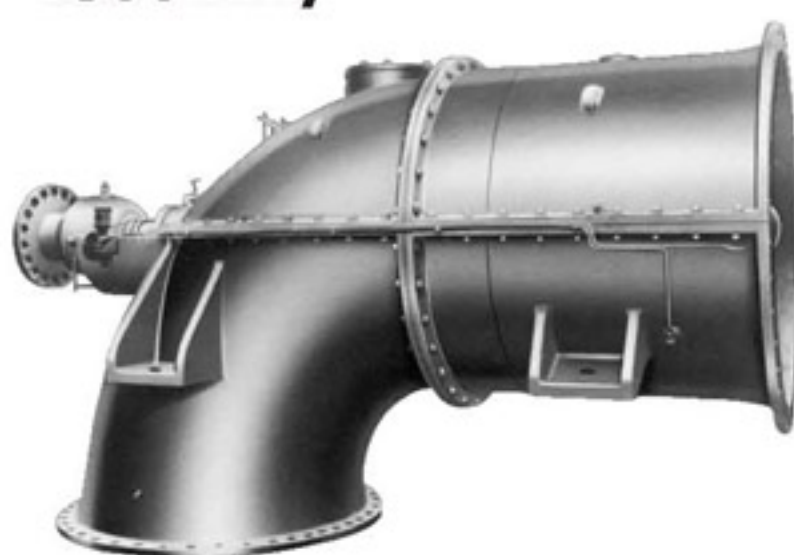




HORIZONTAL AXIAL-FLOW PUMP

HS

HS (500~1500mm)



APPLICATIONS

- River water drainage
- Irrigation and drainage for agricultural use
- Water intake/transfer for general industrial use

FEATURES

- Higher operating efficiency over a wide range of capacities reduce operation cost.
- Simple construction permits easy maintenance.
- Guaranteed high performance, quality and prompt delivery.

SPECIFICATIONS

Bore	500 ~1500mm (20 ~60 in)
Capacity	Approx. 21 ~ 340m ³ / min (5500 ~ 90000 USGPM)
Total head	Approx. 1.2 ~ 4m (4 ~ 13ft)
Liquid	Fresh water, river water, sea water , etc. Temperature 0 ~ 45°C(32 ~110°F)
Construction Radial bearing Thrust bearing Shaft seal	Ball bearing & submerged bearing Roller bearing Gland packing
Accessories	Grease lubricating unit, pump base, shaft coupling, vacuum breaker, anchor bolts

SELECTION CHART

